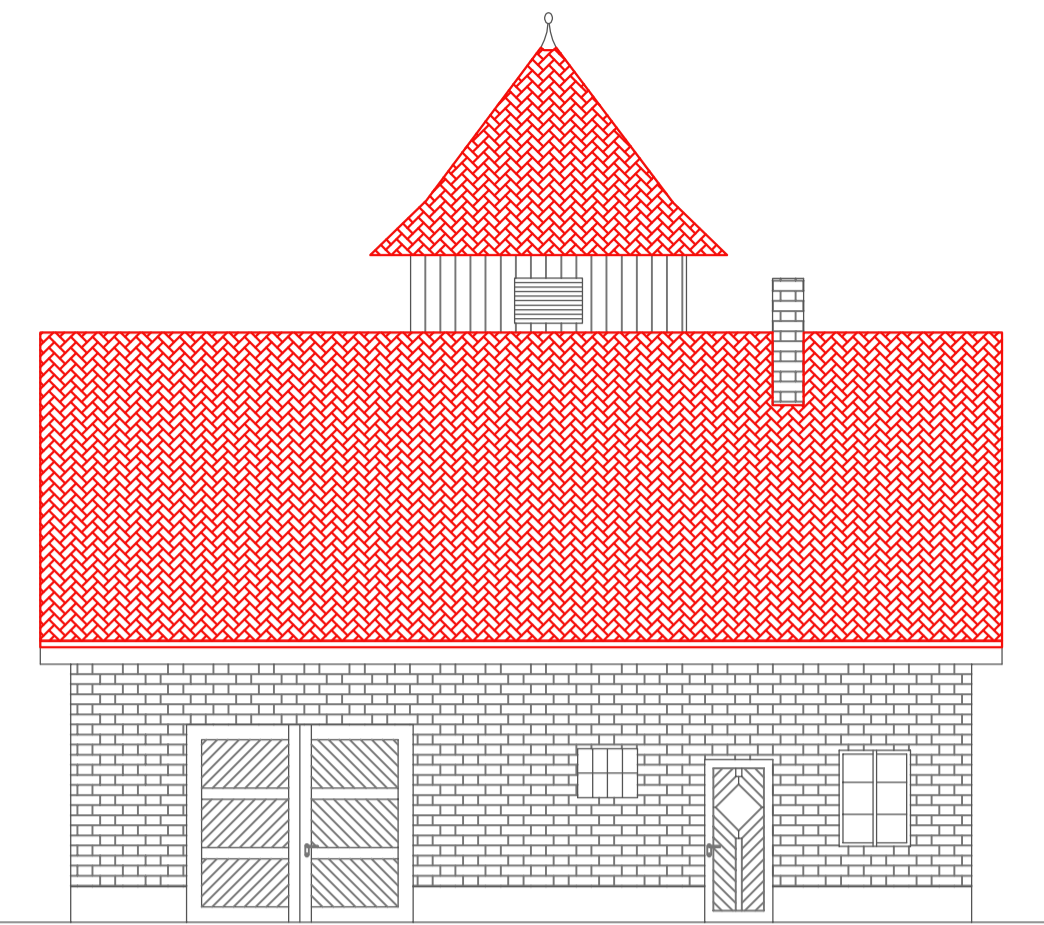


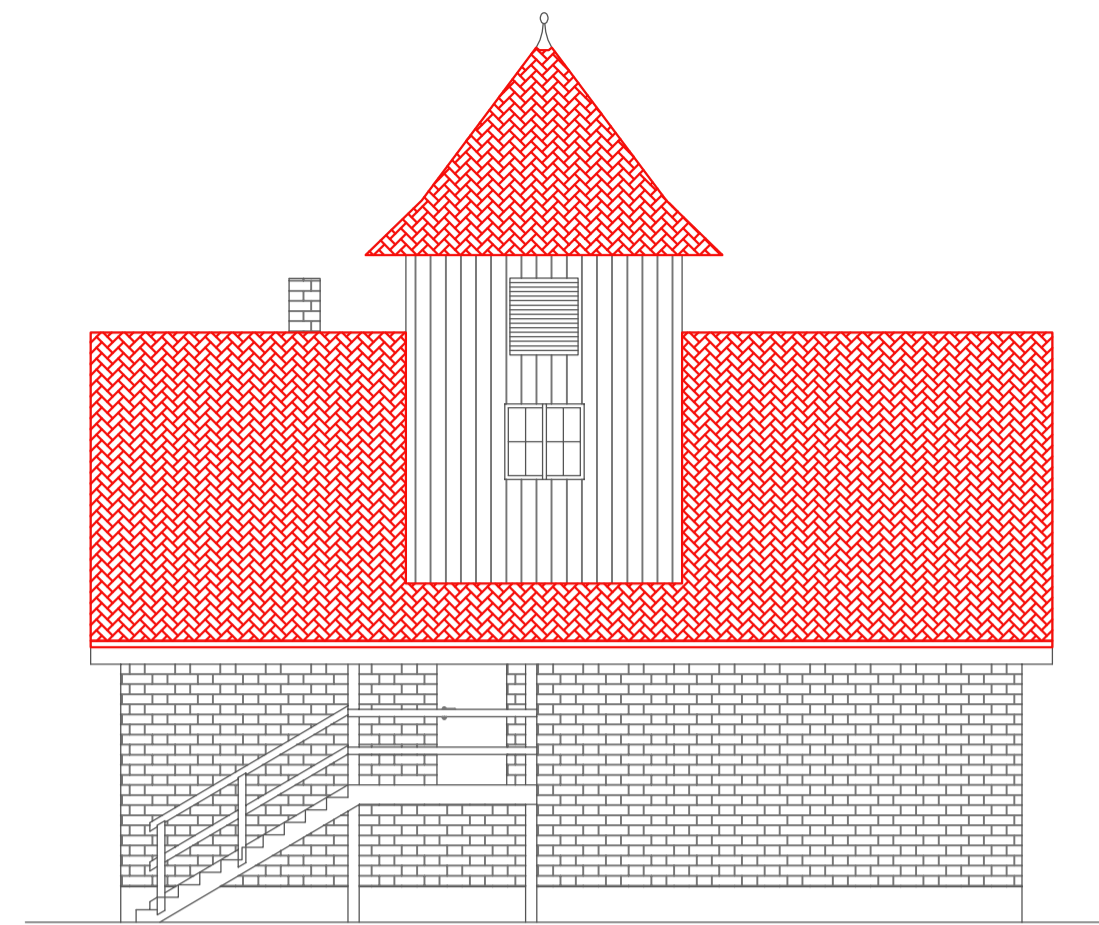
Süd - Ansicht



Ost - Ansicht

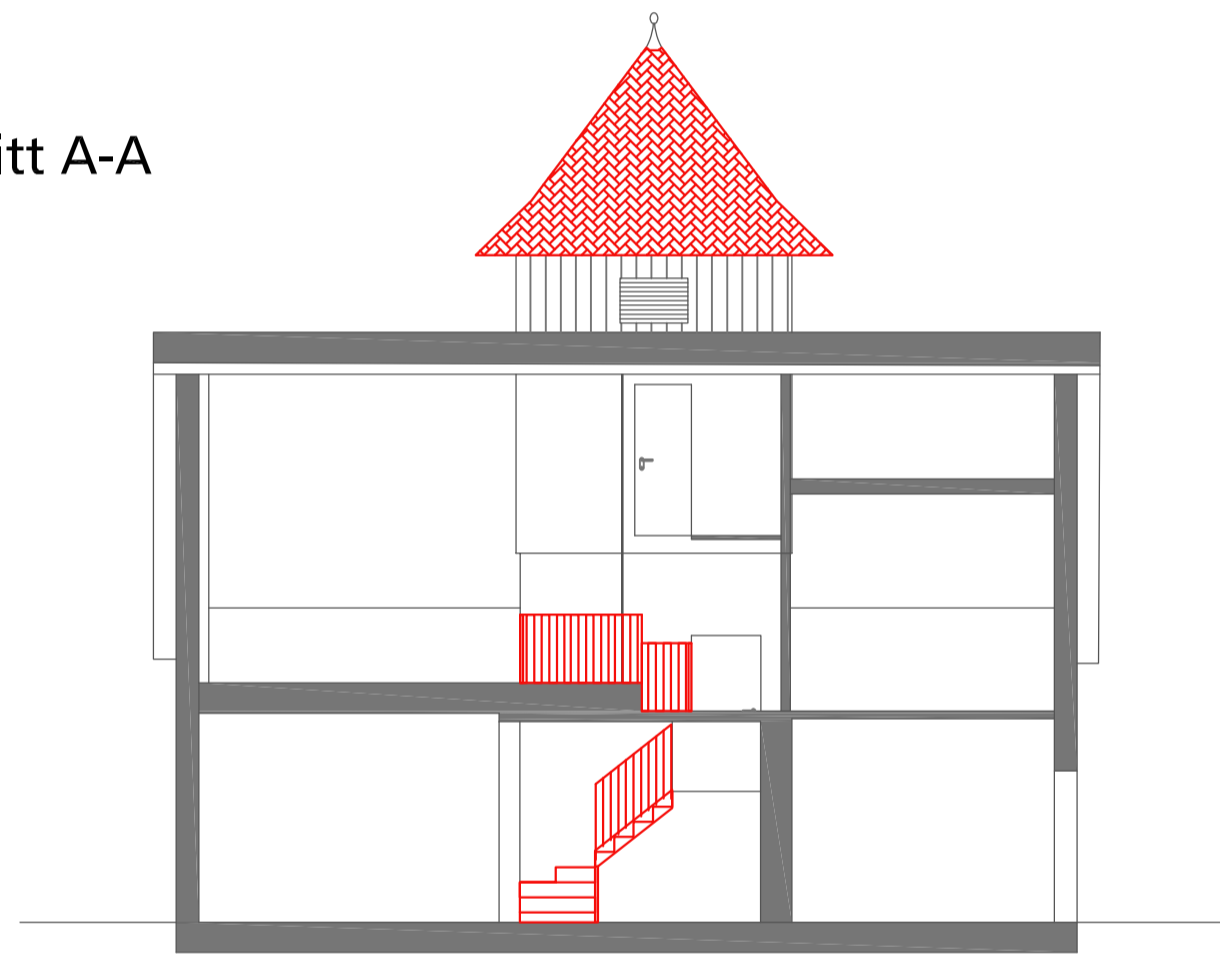


Nord - Ansicht

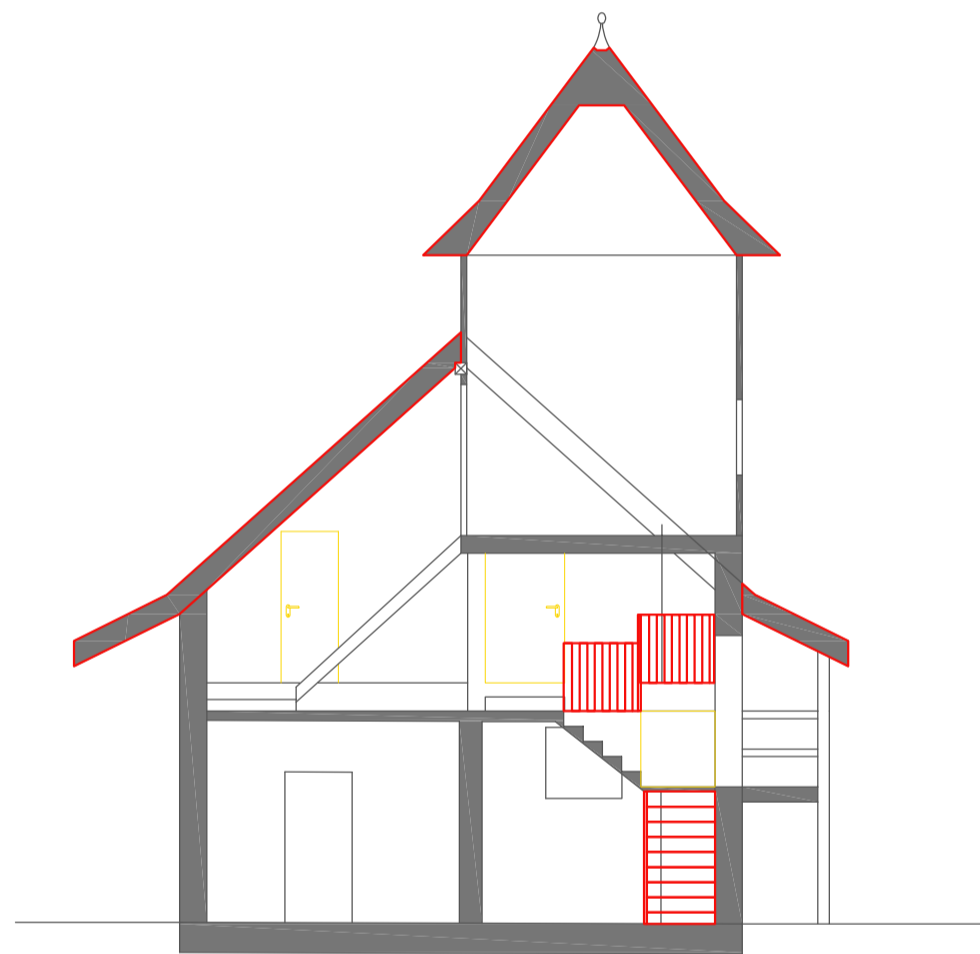


West - Ansicht

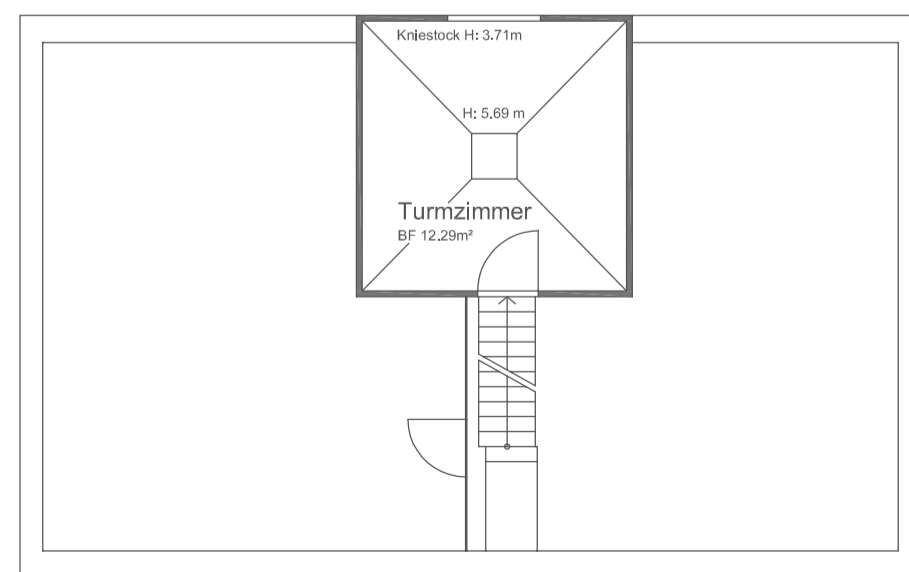
Schnitt A-A



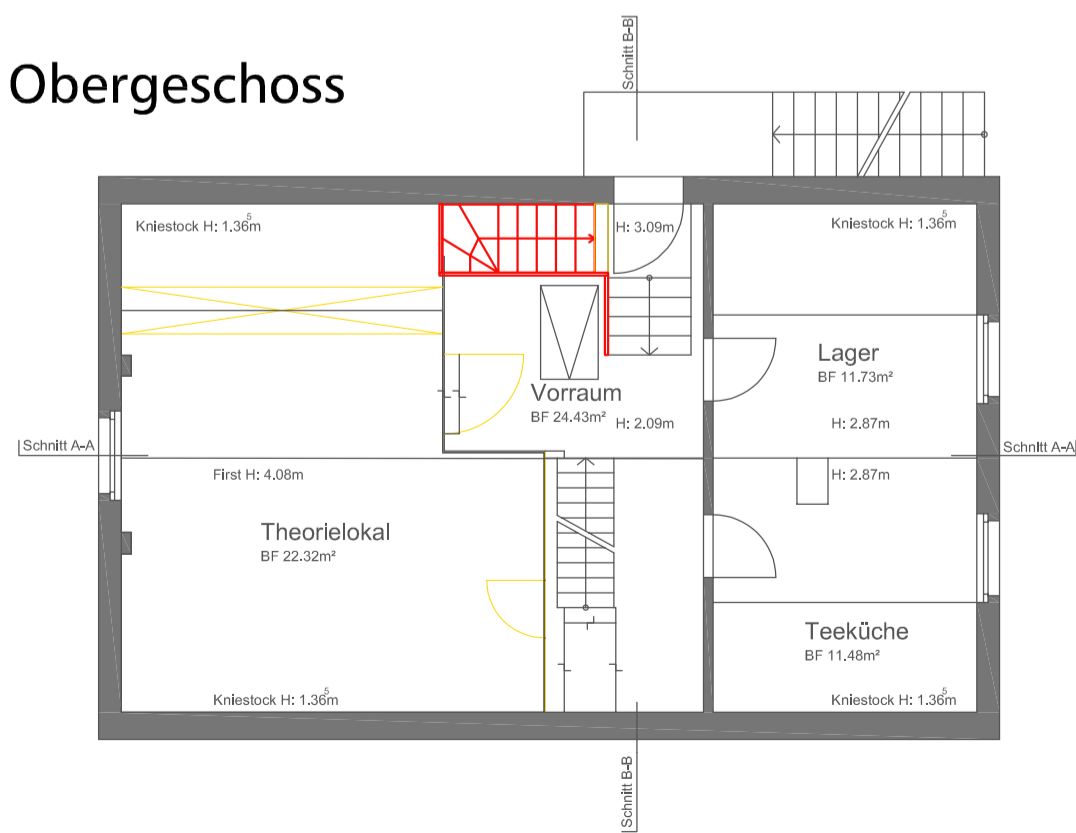
Schnitt B-B



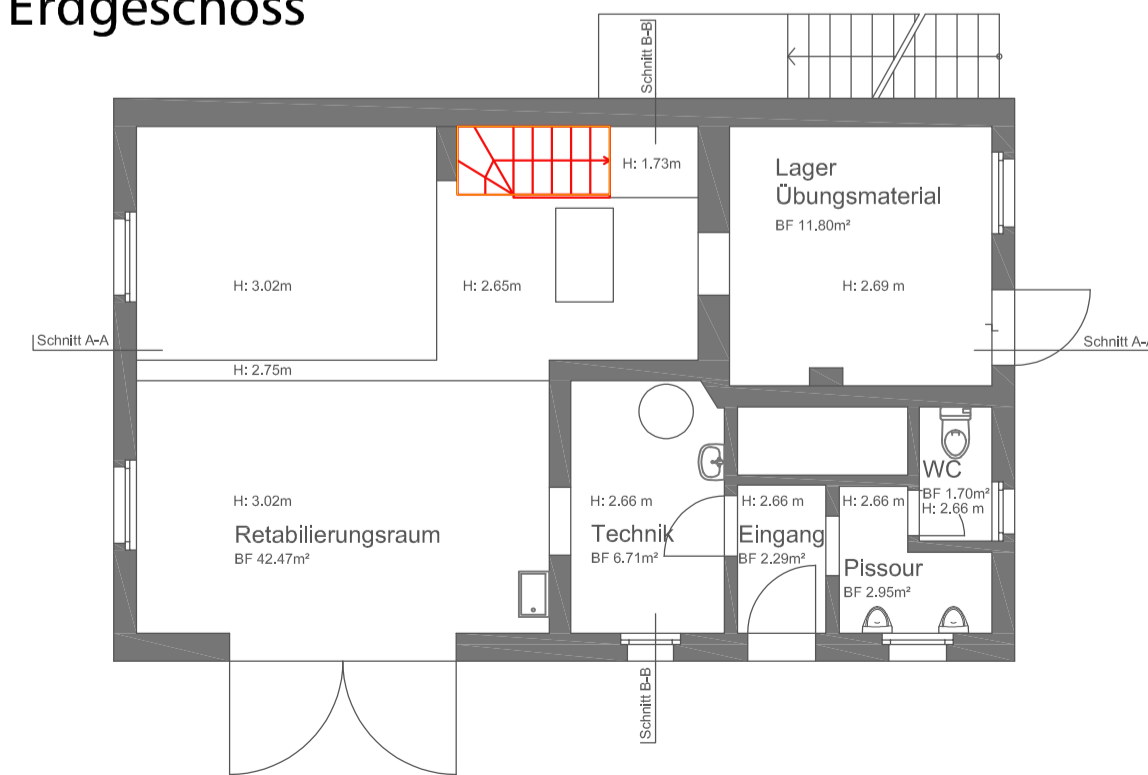
Turmgeschoss



Obergeschoss



Erdgeschoss



Spritzenhaus - Baueingabe
Widenbuelstrasse 3, 8103 Unterengstringen
 Grundriss, Ansicht & Schnitte

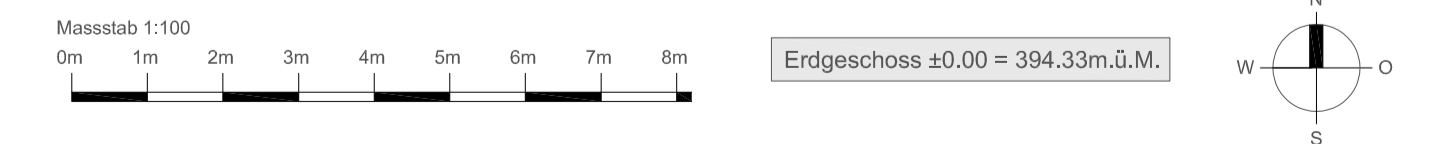
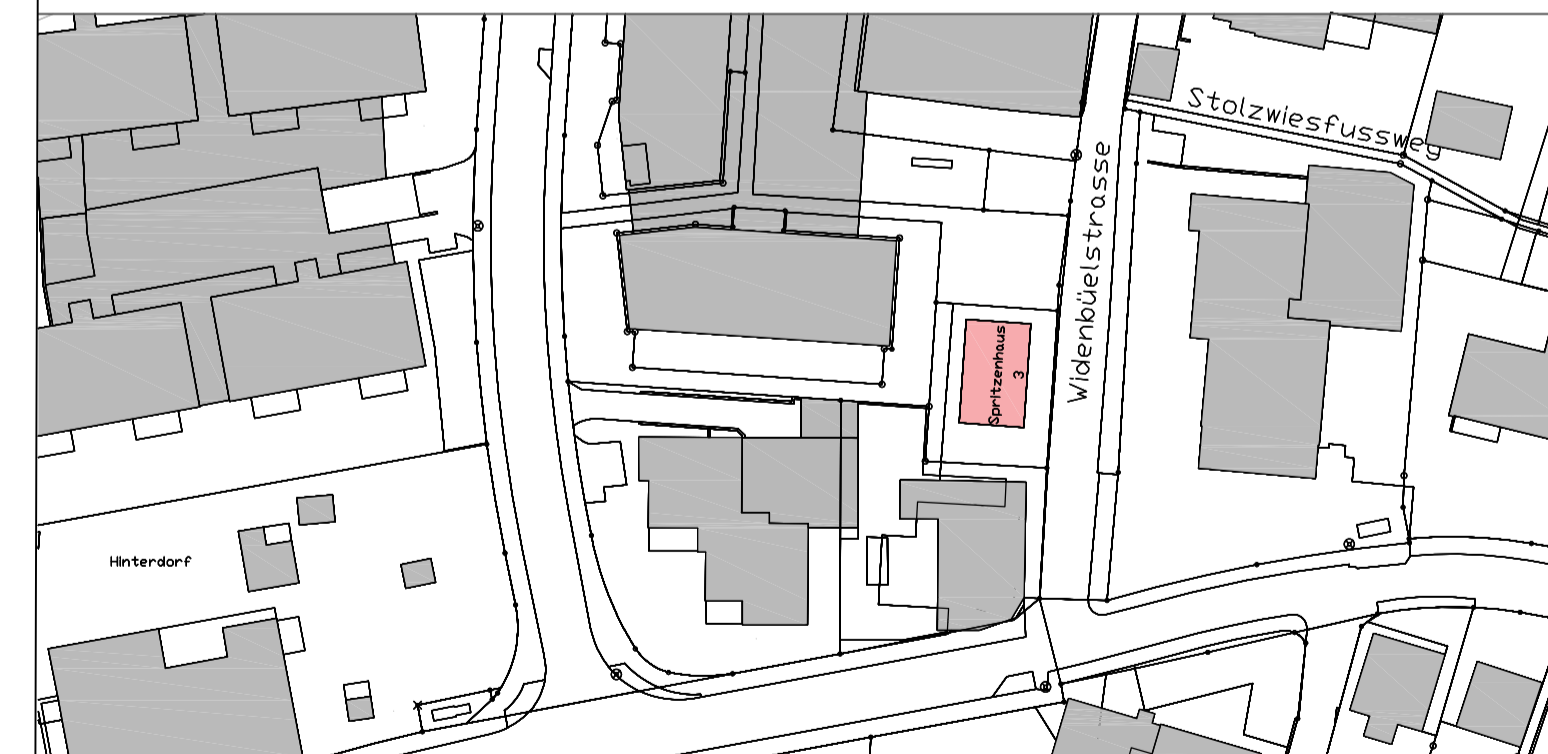
Masstab 1:100

Plan Nr. 2946 - 01
 Format 42x72
 Datum / Gez. 14.03.2024 / STR

Legende ■ Neu ■ Bestehend ■ Abbruch

Unterengstringen, Datum Bauherrschaft

Unterengstringen, Datum Projektverfasser



Ruggli & Partner Bauingenieure AG
 Riedhofstrasse 354 8049 Zürich
 Telefon 044 340 28 80
 www.rugglipartner.ch

Zürcherstrasse 71 8103 Unterengstringen
 info@rugglipartner.ch

